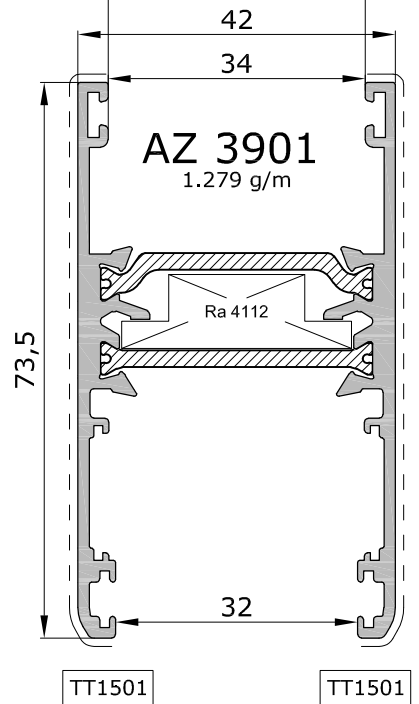
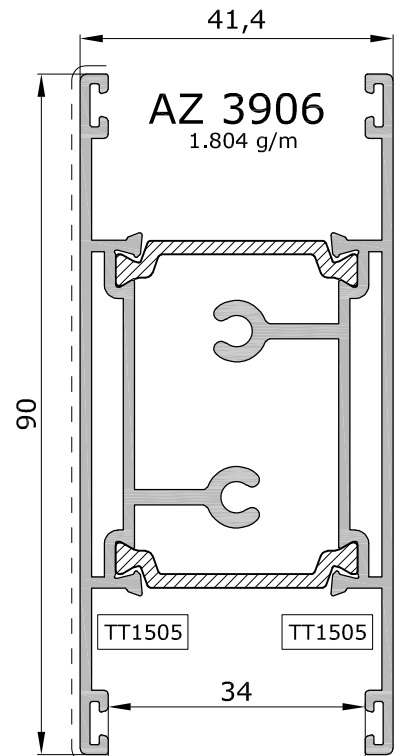
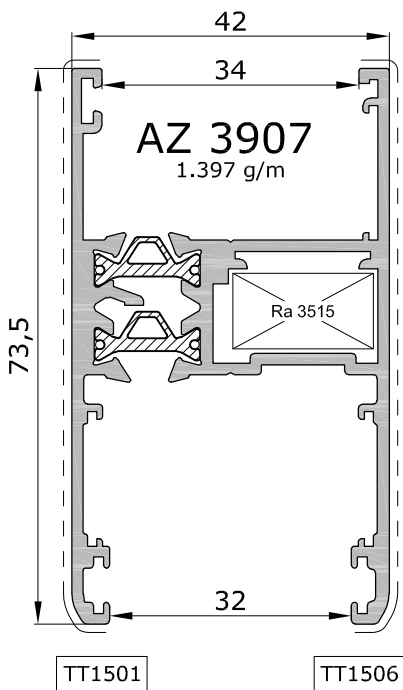
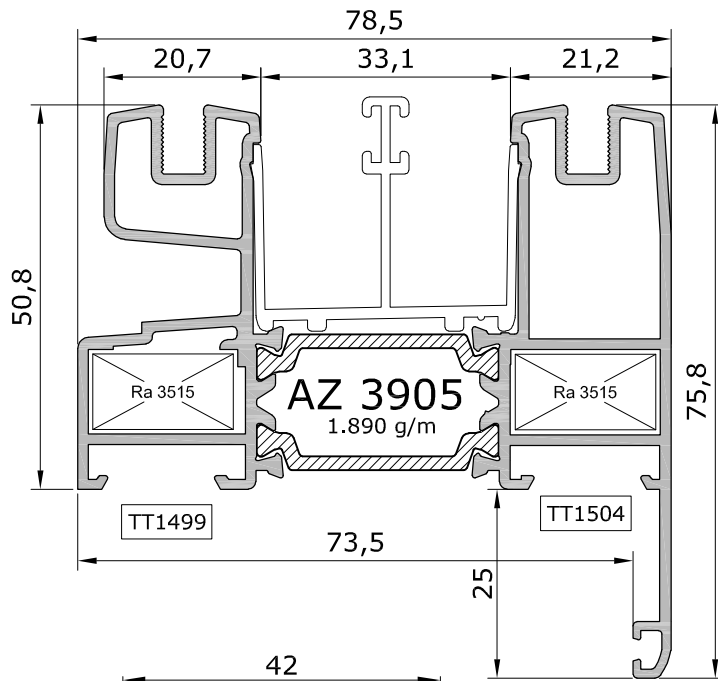
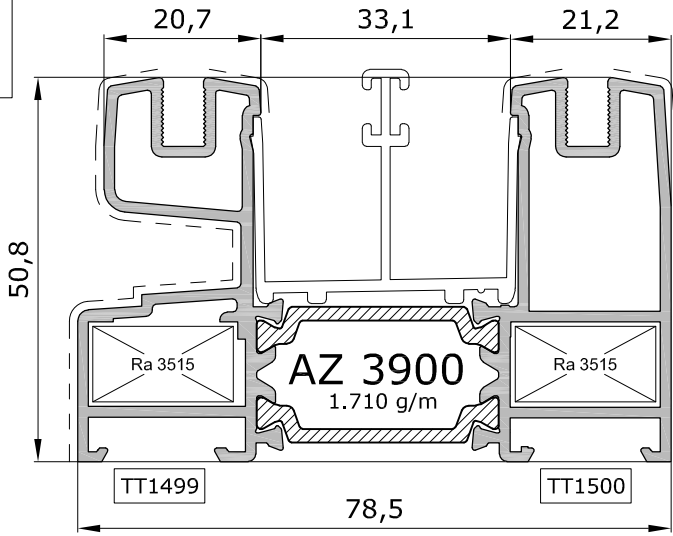
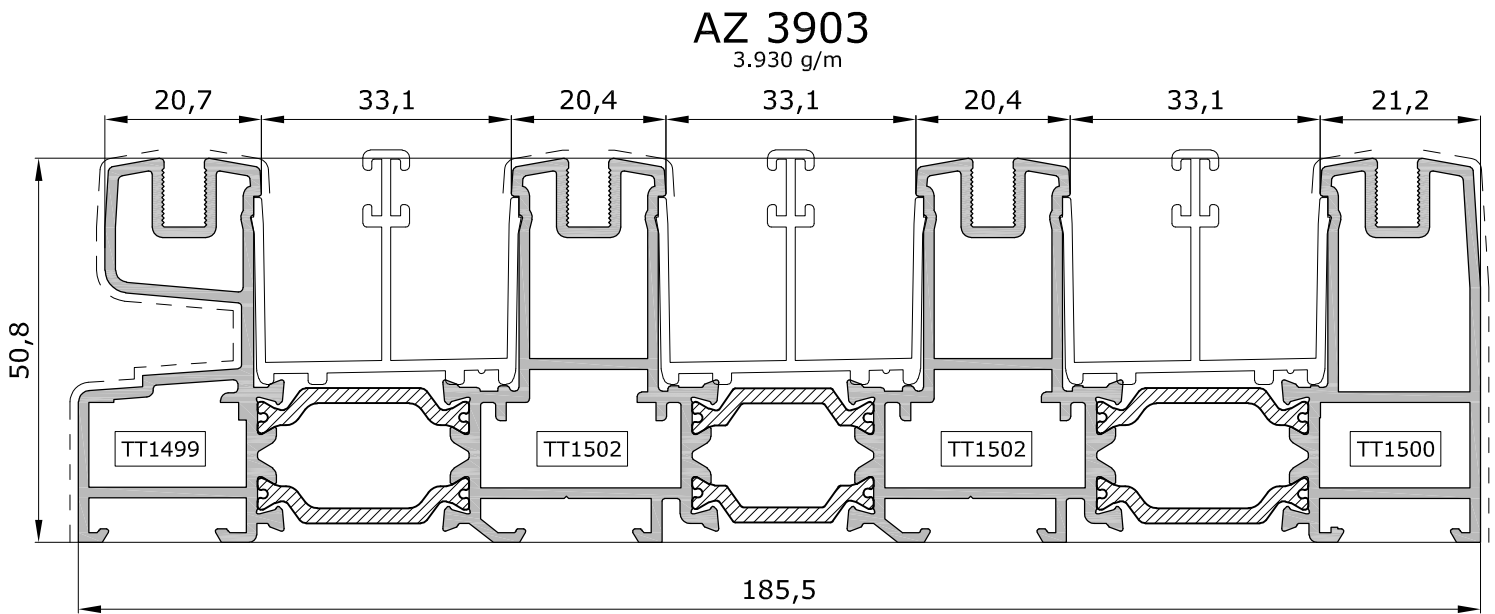
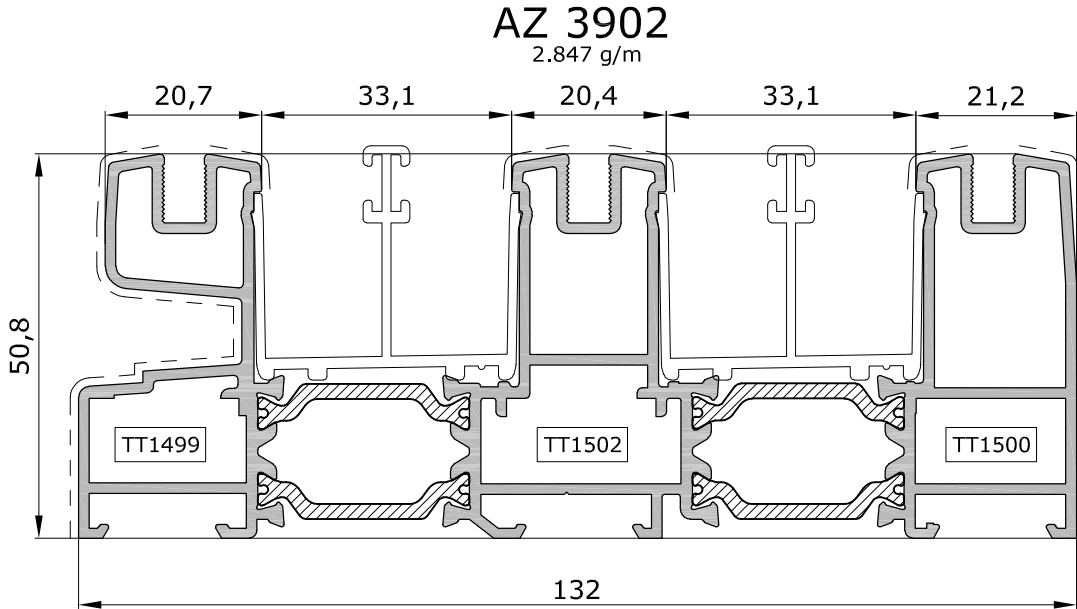


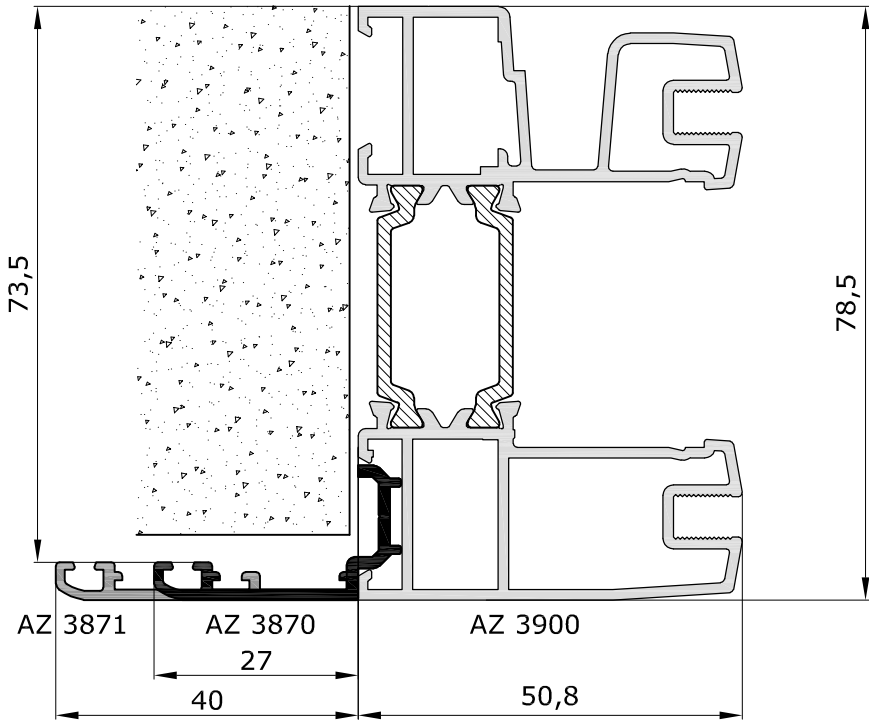
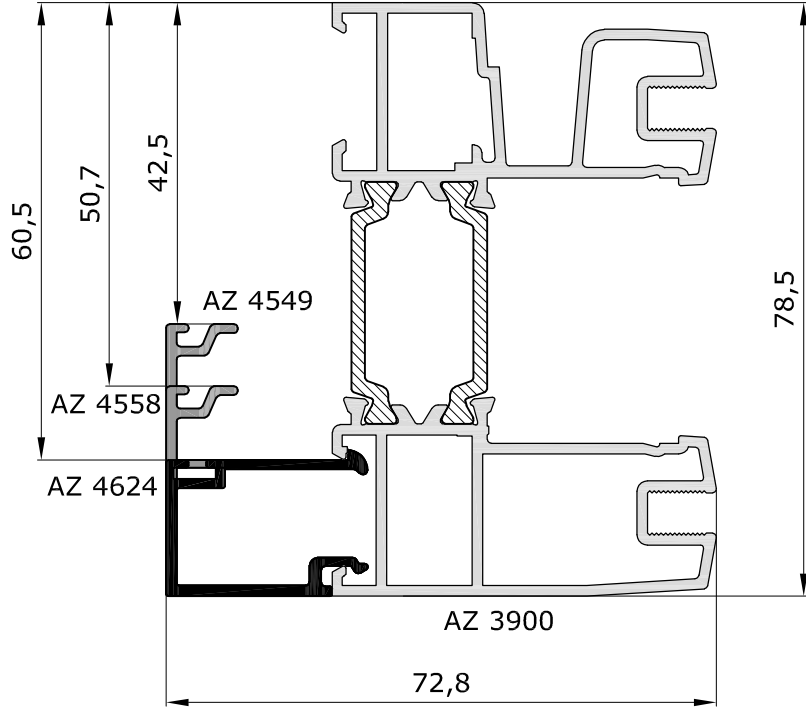
scala 1:1



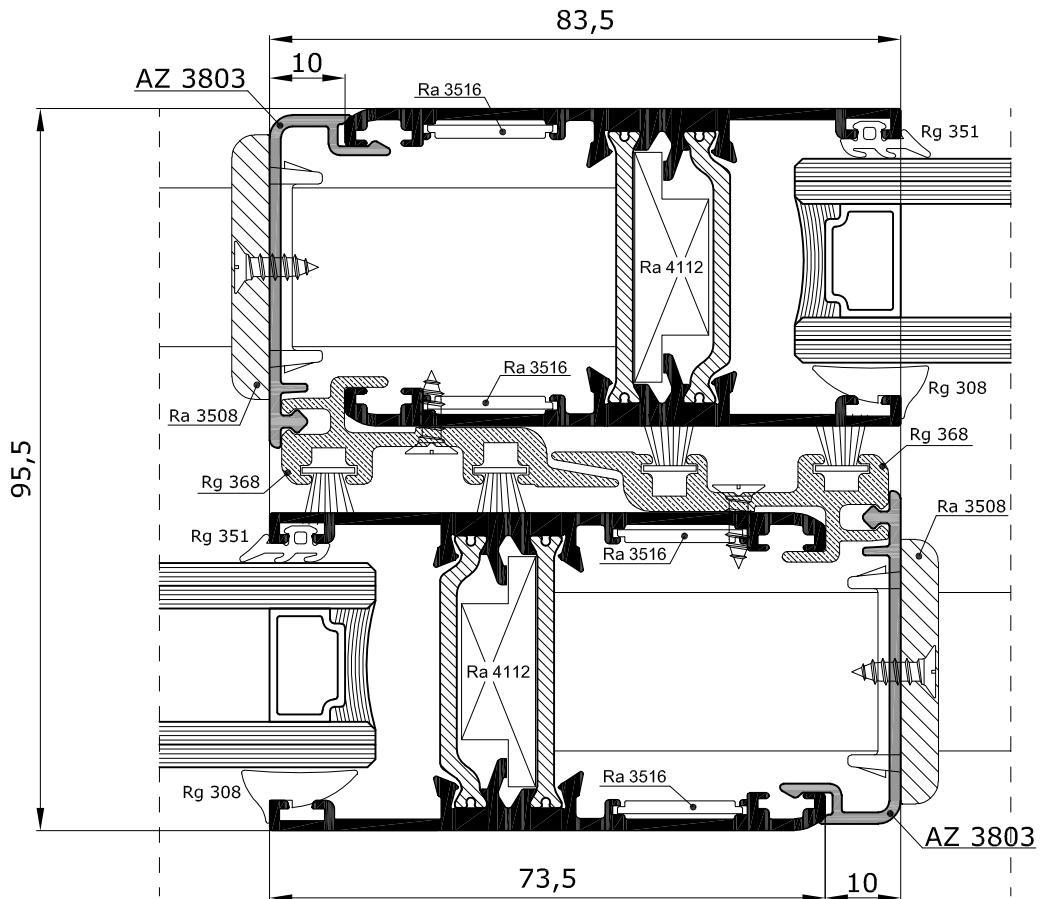
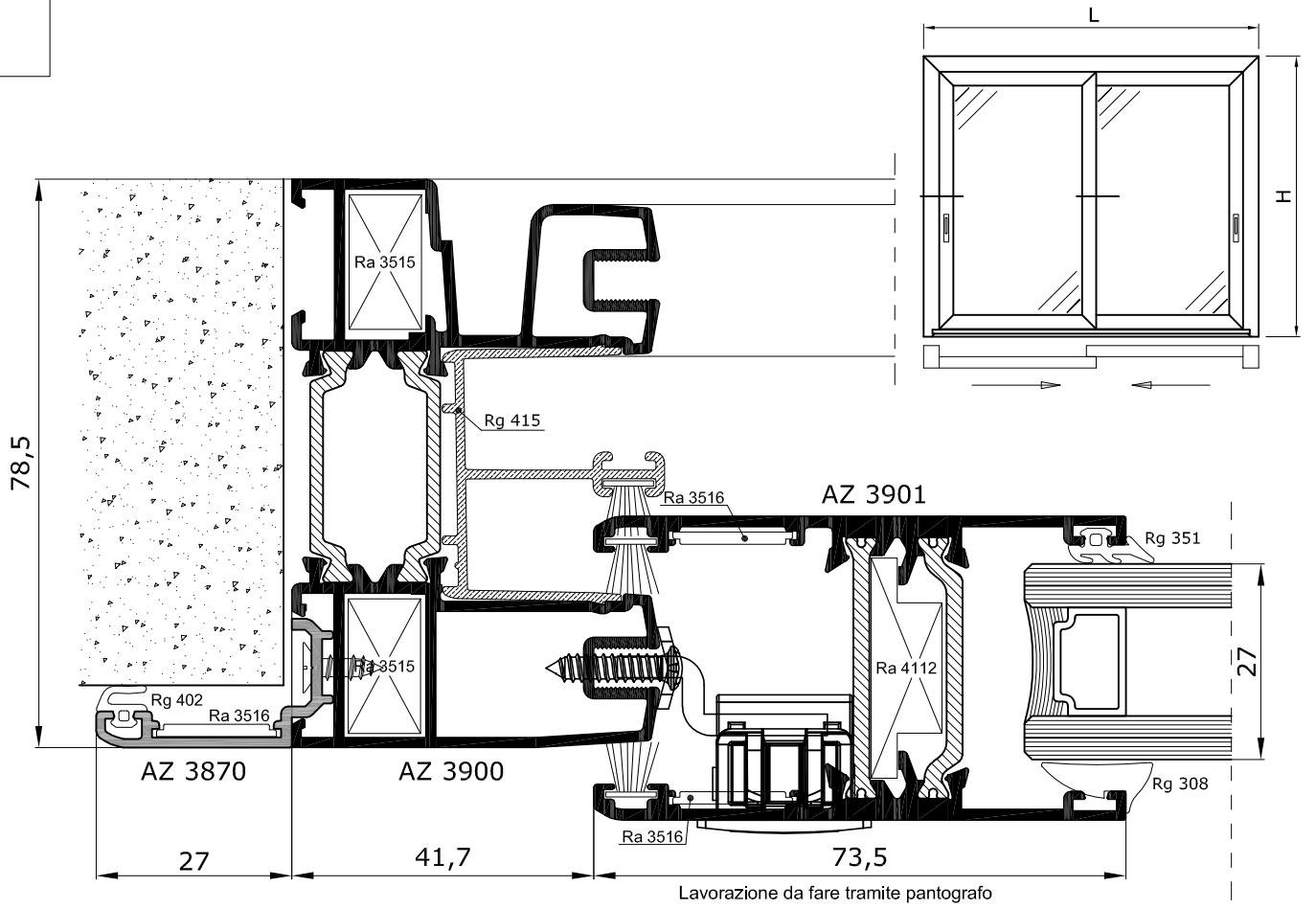
scala 1:1



scala 1:1



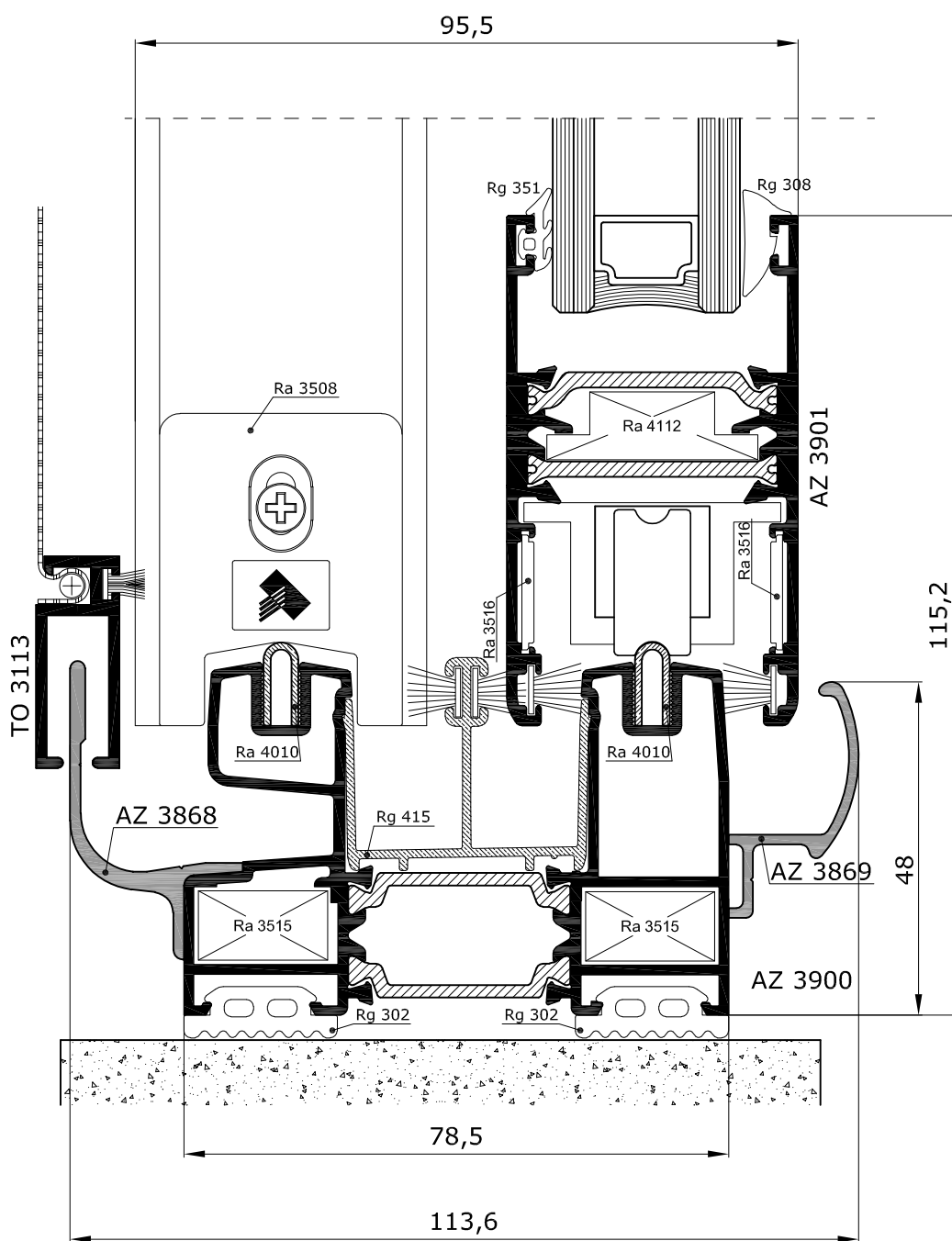
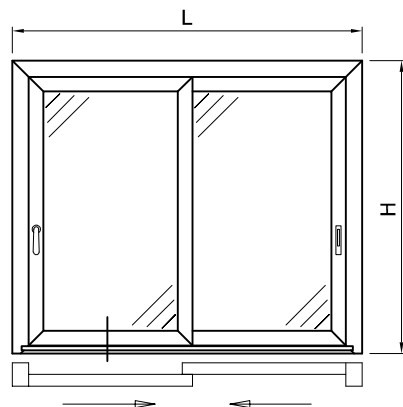
scala 1:1



FINESTRA A DUE ANTE
- anta con vetro ad infilare-

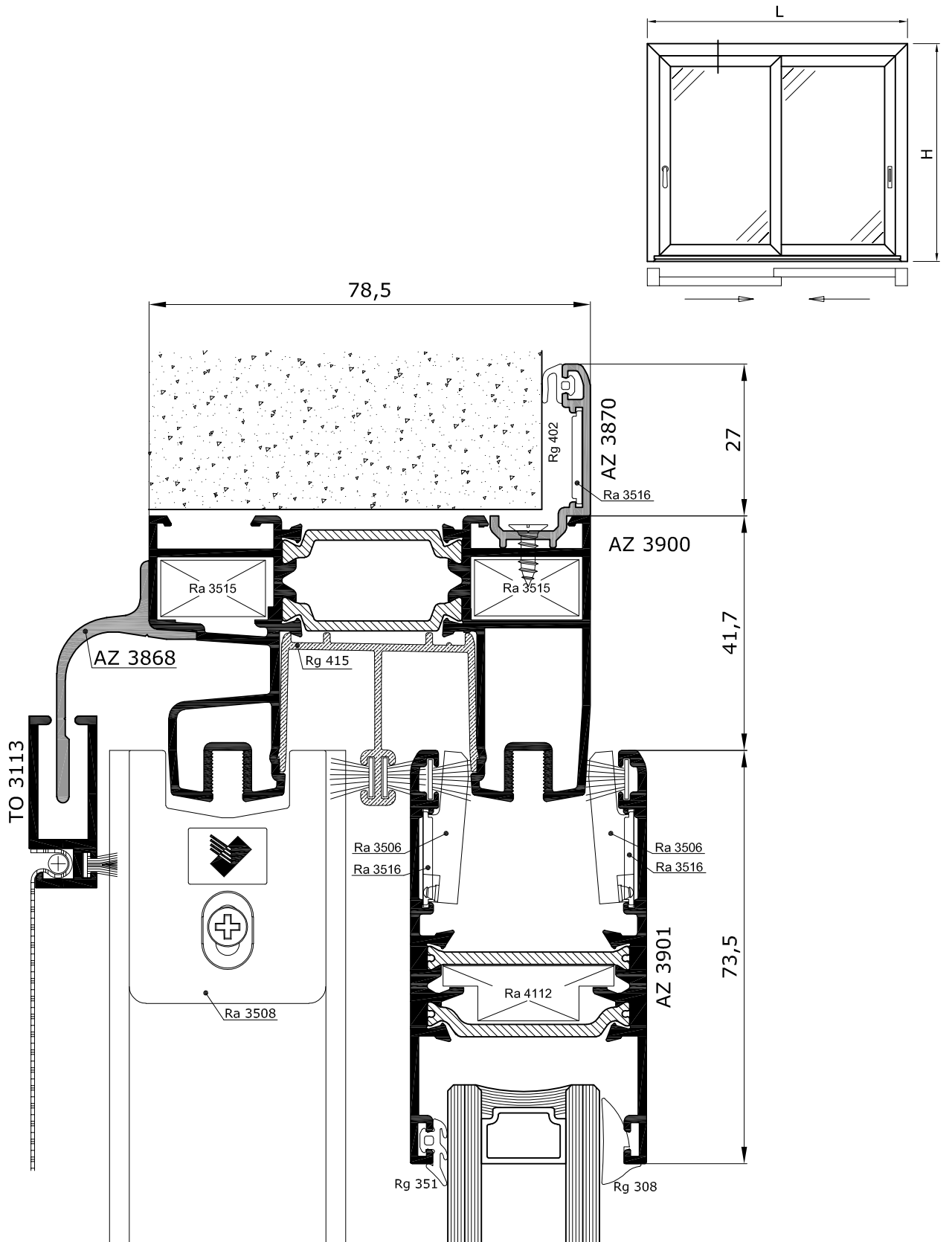
AGGIORNAMENTO ATLANTIS 78STT

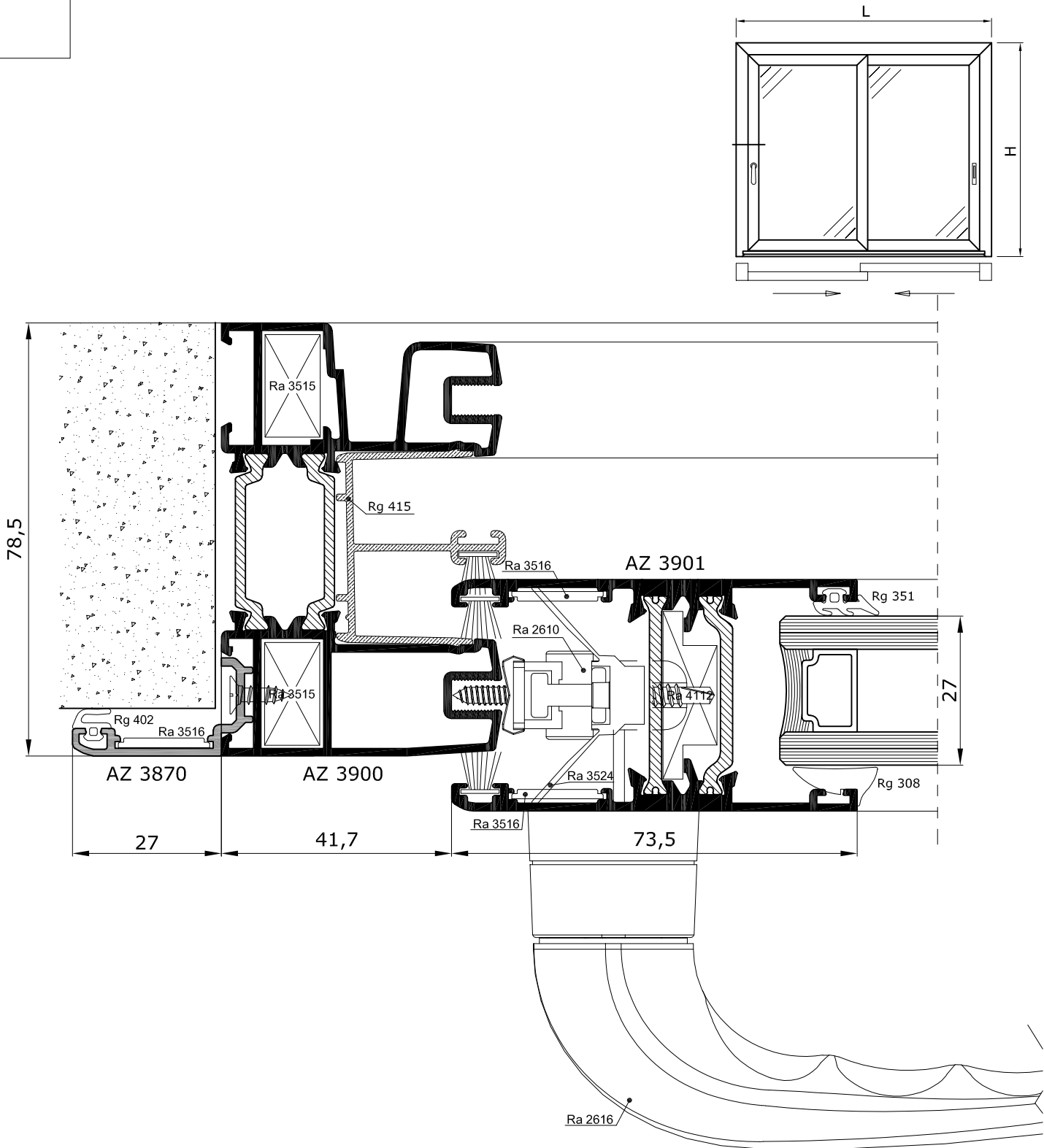
scala 1:1



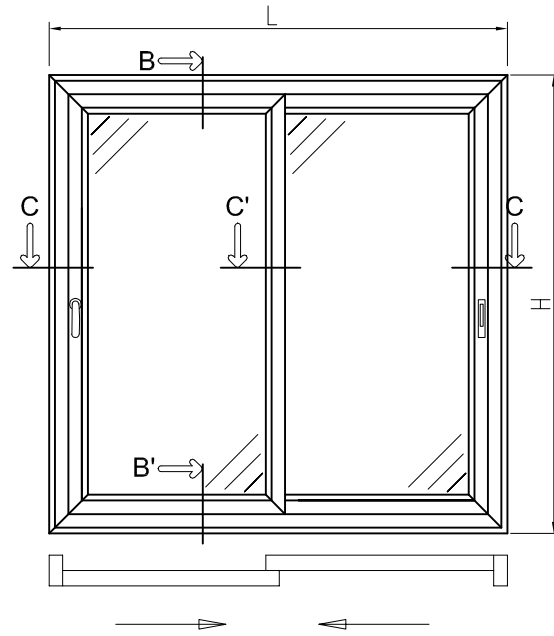
scala 1:1

sezioni sezioni





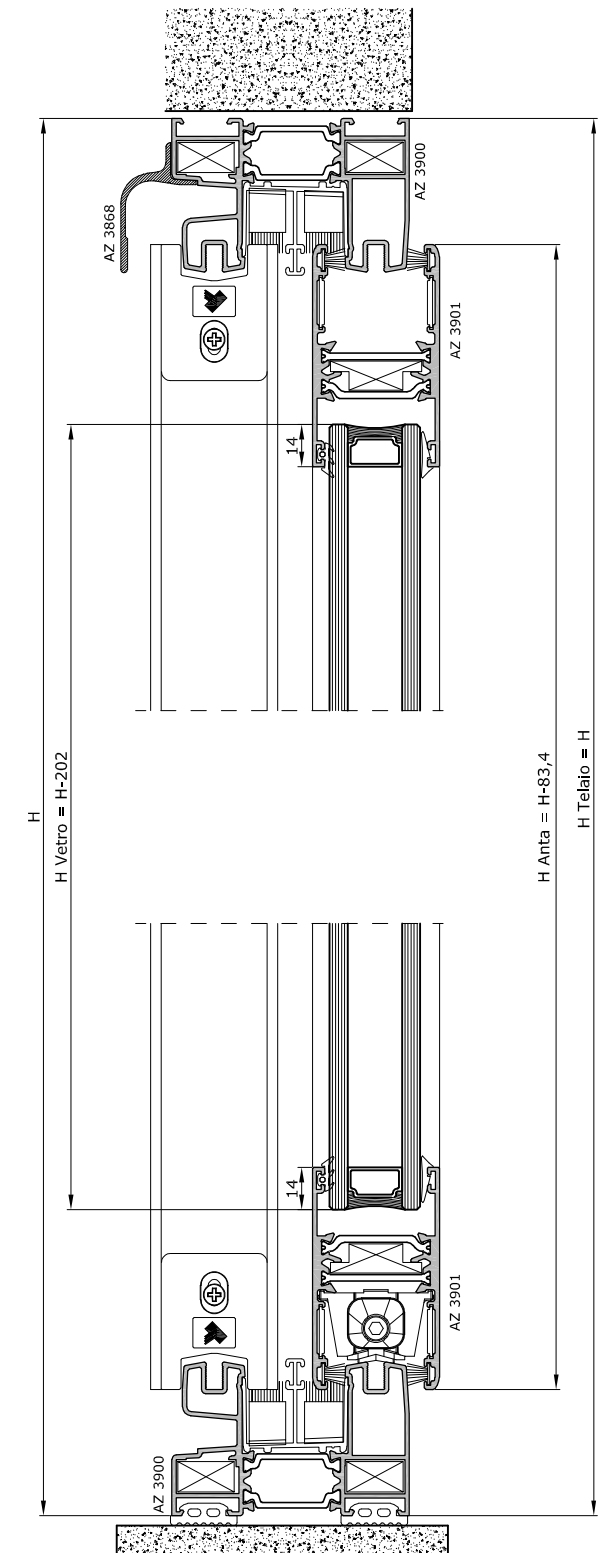
ATLANTIS 78 STT REVAMPING
- finestra scorrevole a due ante -



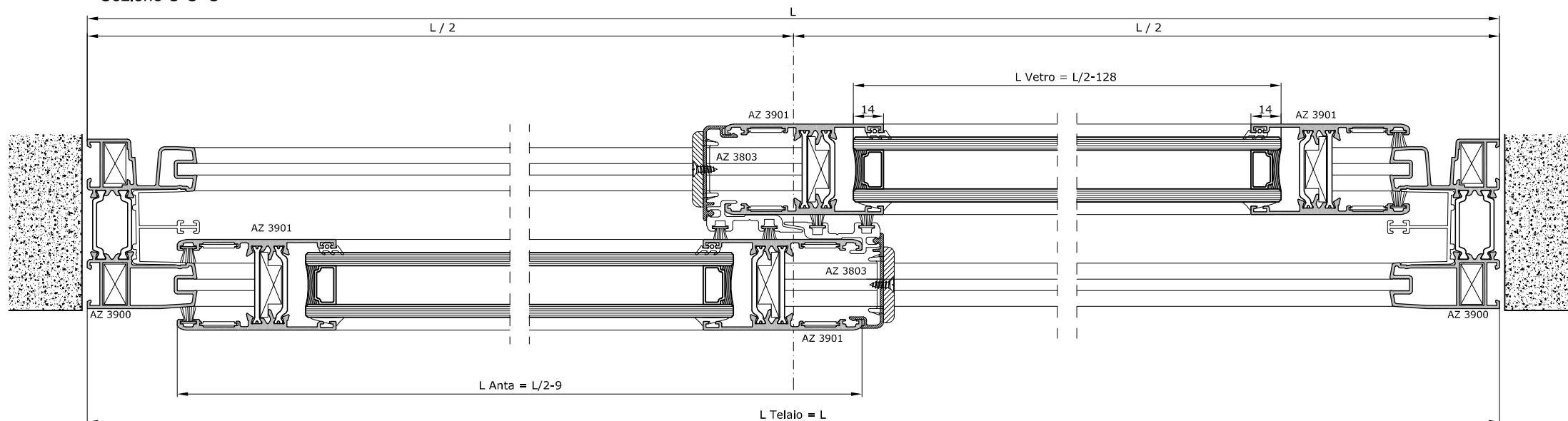
CALCOLO PESO PROFILI		TOTALE KG
Profili Orizz.	Kg/ml $6,1 \times L$	
Profili Vert.	Kg/ml $9,3 \times H$	
TOTALE		

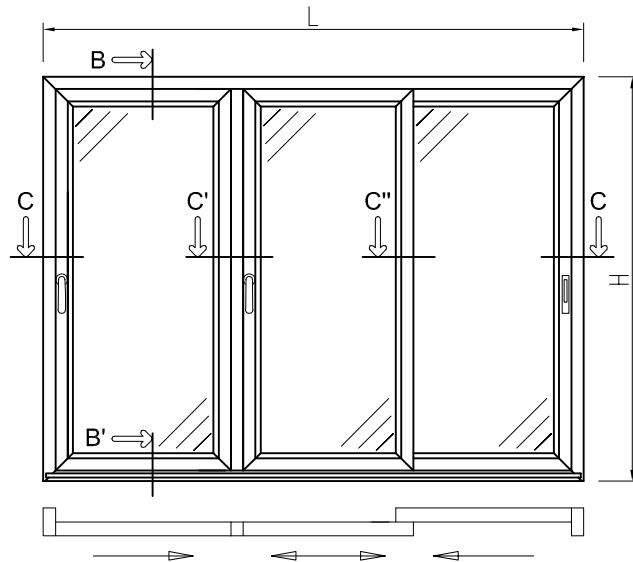
DISTINTA TAGLIO VETRI			
Posizione	l	h	Q.tà
	L/2 - 128	H - 202	2

Sezione B-B'



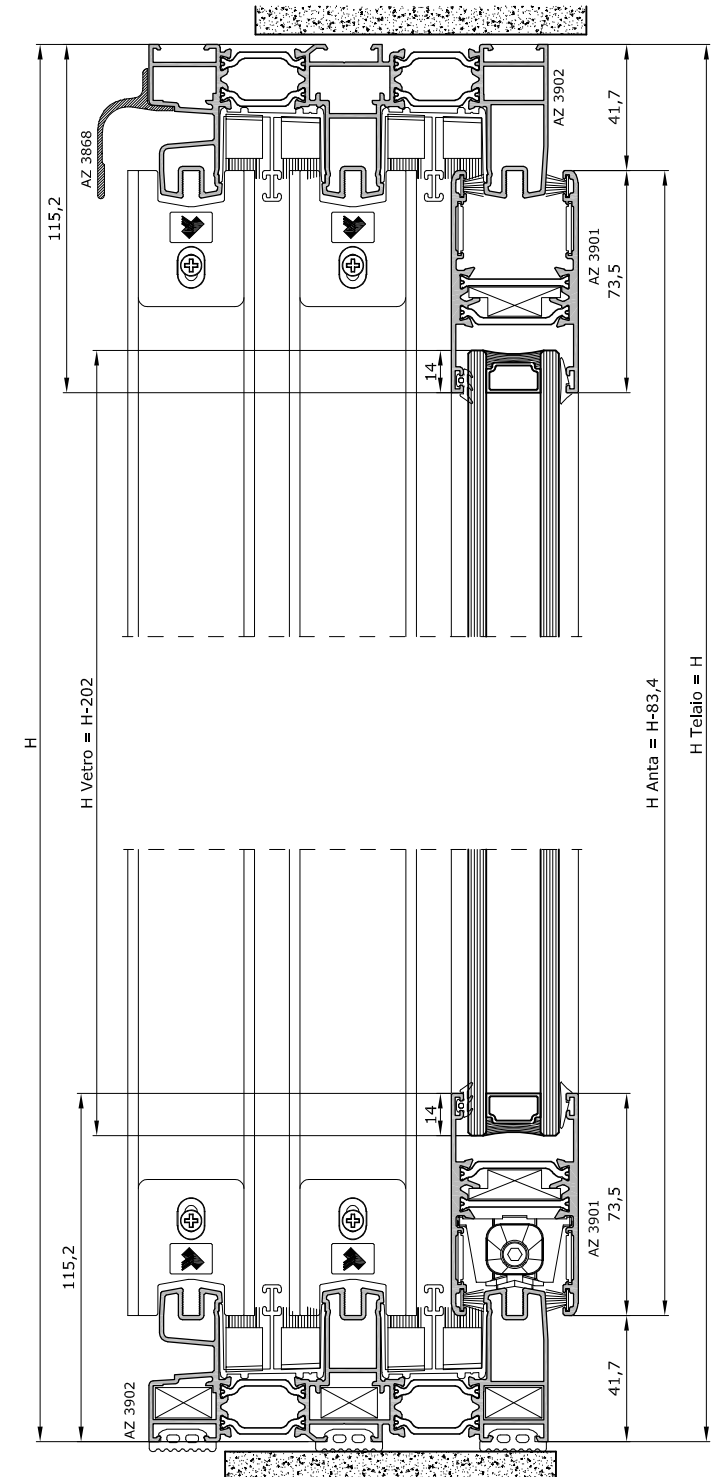
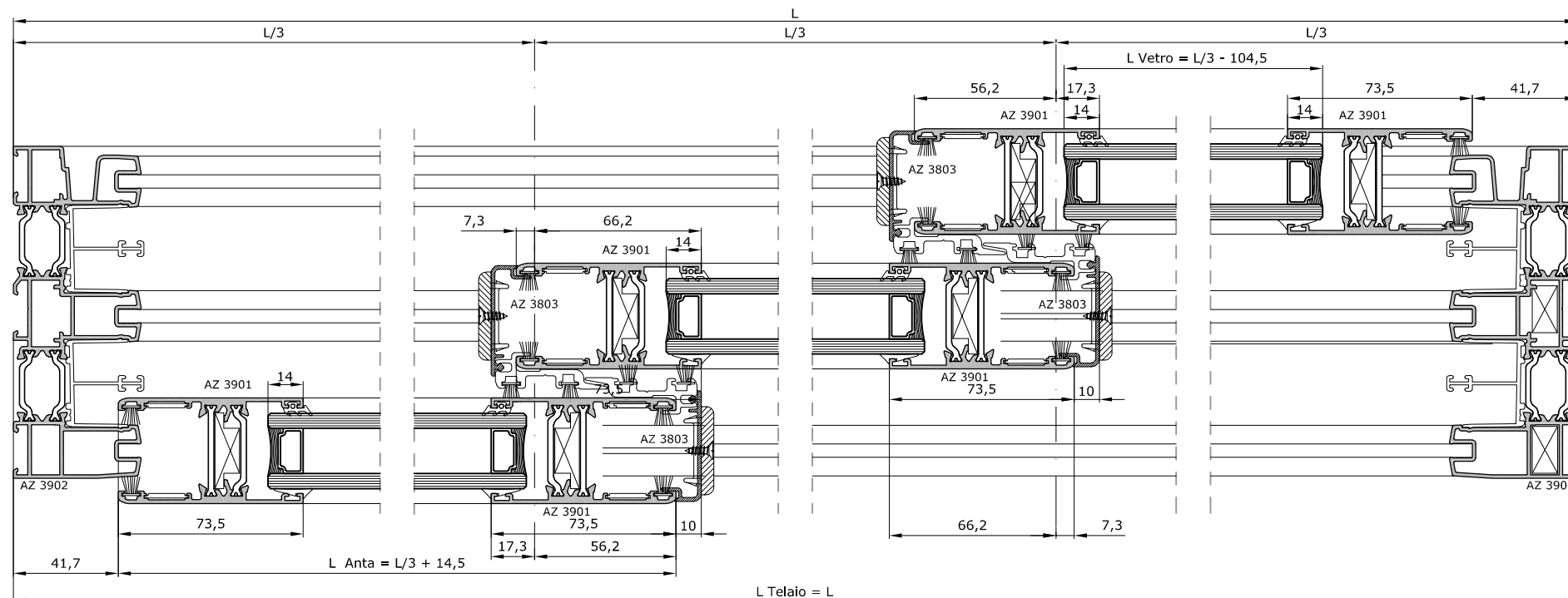
Sezione C-C'-C





DISTINTA TAGLIO VETRI			
Posizione	l	h	Q.tà
	L/3 - 104	H - 202	3

Sezione C-C'-C"-C misure espresse in mm



distinte di taglio
cutting sizes

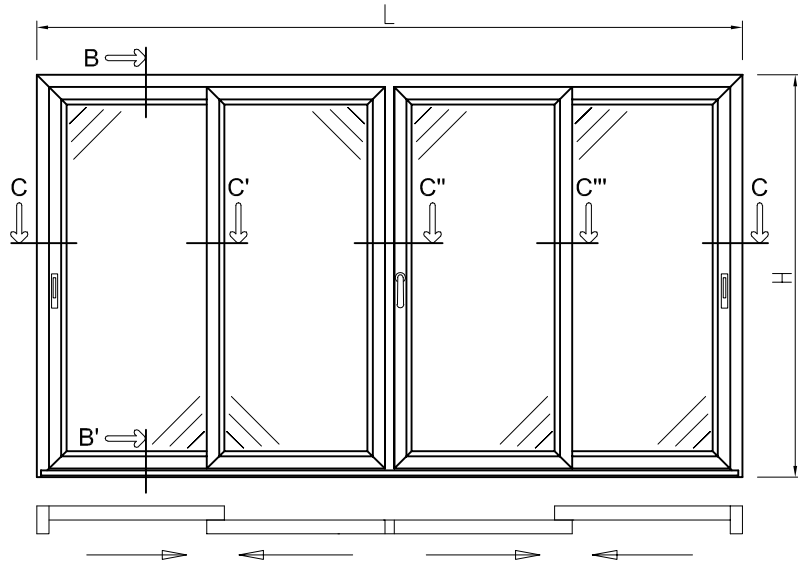
ATLANTIS 78 STT
- finestra scorrevole a quattro ante -

TIPOLOGIA 3

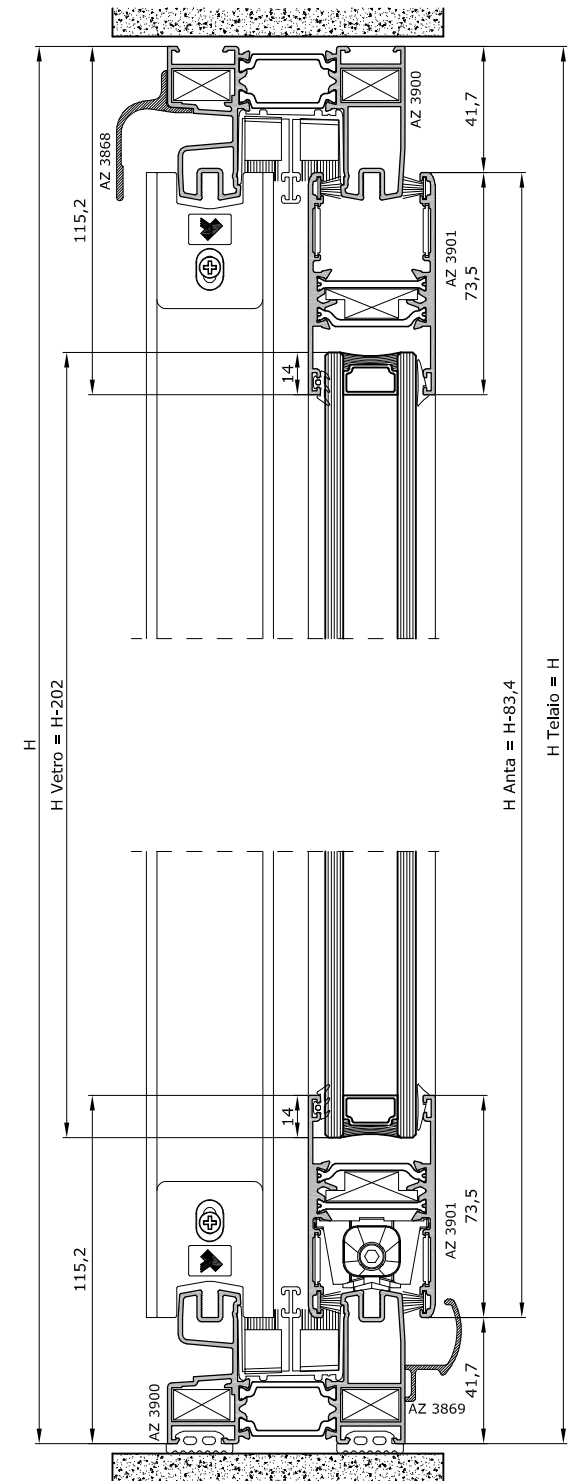
Misure espresse in mm

DISTINTA TAGLIO PROFILI

ARTICOLO	PROFILO	DESCRIZIONE	TAGLIO	Pezzi
AZ 3900		TELAIO L	H L	2
AZ 3901		ANTA	H - 83,4 L/4 + 10	8
AZ 3813		RISCONTRO 4° ANTE	H - 83,4	1
AZ 3803		AGGANCIO CENTRALE	H - 83,4	4
AZ 3869		RACCOGLICONDENSA	L	1
AZ 3868		GOCCIOLATOIO	L	1



Sezione B-B'



DISTINTA TAGLIO VETRI

Posizione	l	h	Q.tà
	L/4 - 110	H - 202	4

Sezione C-C'-C''-C'''-C

